

For Lease



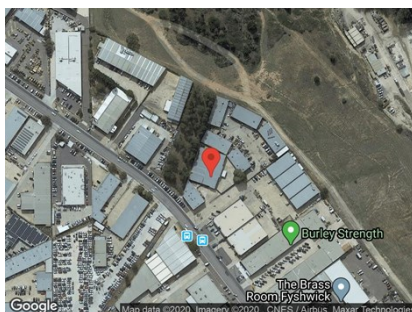
FYSHWICK PROFESSIONAL OFFICE SUITES, 125 Gladstone Street, FYSHWICK 2609

Unit:	Area sqm:	Rent \$/sqm	Rental PA	Net/Gross
Level 1 Unit Various	30	\$533	\$16,000	Gross

All figures are exclusive of GST.

Location

Located in the heart of Gladstone Street in Fyshwick the major industrial suburb of Canberra.



Description

Good sized, modern offices with lease terms being either on a monthly basis or annually. Includes:

- * Reverse-cycle air conditioning
- * Internet connections
- * Modern kitchen-breakout area
- * Conference room
- * Recently re-painted and new carpet laid
- * Intercom system from street
- * Fully secure 24/7

Available now to lease! Short or long term lease

Outgoings

Gross rent

Car Parking

On site & at rear



Boardroom



Secure access



Natural light



Air Con

Contact:

Brett Barton

P 02 6282 9090

M 0418 633 447

E brett@bartonproperty.net.au

www.bartonproperty.net.au

P (02) 6282 9090 | A Unit 15, 169 Newcastle St Fyshwick ACT 2609 | PO Box 395, Fyshwick ACT 2609