



## 42 Darling Street, MITCHELL 2911

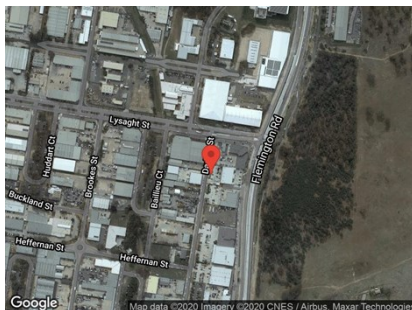
Modern Workshop

Unit:	Area sqm:	Rent \$/sqm	Rental PA	Nett/Gross
Unit 2	216	\$250	\$54,000	Gross

All figures are exclusive of GST.

### Location

Located on the popular Darling Street, which runs parallel to Flemington Road, also linking other streets in Mitchell



### Description

Available 31st of March. A total of 216 sqm made up of warehousing with an administration office. The unit comprises of roller door access and a 6 metre clearance within the warehouse. Offering good street frontage and wide zoning.

### Outgoings

Increase above a base year

### Car Parking

yes

### Contact:

**Brett Barton**

P 02 6282 9090

M 0418 633 447

E [brett@bartonproperty.net.au](mailto:brett@bartonproperty.net.au)