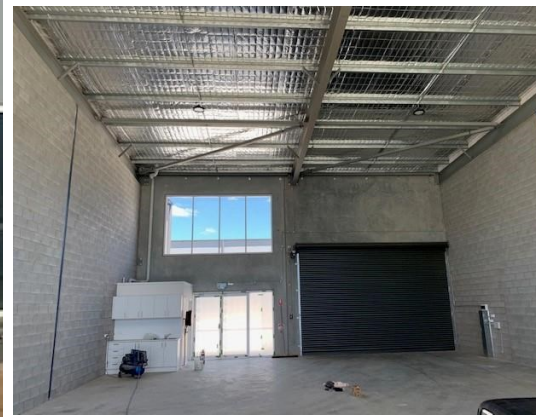


# For Lease

# Barton

The Positive Partnership



## 8 Beaconsfield Street, FYSHWICK 2609

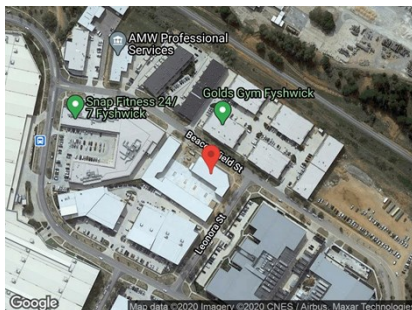
LARGE STREET FRONTAGE-NEWLY BUILT WAREHOUSING

Unit:	Area sqm:	Rent \$/sqm	Rental PA	Nett/Gross
Unit 12	235	\$277	\$65,000	Gross

All figures are exclusive of GST.

### Location

This property is located in the new retail/bulky goods precinct in Fyshwick, close to the Canberra Outlet Centre.



### Description

A prime corner location on Beaconsfield and Leonora Street. This is a modern industrial showroom complex of 14 units that allows for bulky goods/industrial and a fast food/café site. The complex has shopfronts and roller doors with on-site carparking with allocated carparks per unit.

Ready to move in now!

### Outgoings

Increases in outgoings above a base year 30 June 2020

### Car Parking

3

### Contact:

**Patrick Barton**

P

M 0459 690 788

E [patrick@bartonproperty.net.au](mailto:patrick@bartonproperty.net.au)

[www.bartonproperty.net.au](http://www.bartonproperty.net.au)

P (02) 6282 9090 | A Unit 11, 8 Gladstone Street, FYSHWICK ACT 2609 | PO Box 395, FYSHWICK ACT 2609

The information contained herein has been supplied to us. In passing the information on it should be noted that we do so without any representation on our part as to its truth or accuracy. All interested parties should make their own enquiries, and obtain their own independent advice, in order to verify the information.