



## 6 Pelle Street, MITCHELL 2911

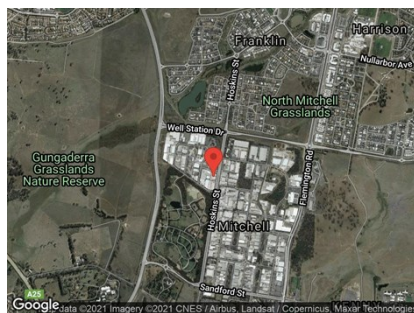
MITCHELL MODERN OFFICE

Unit:	Area sqm:	Rent \$/sqm	Rental PA	Nett/Gross
Unit 1b	160	\$375	\$60,000	Gross

All figures are exclusive of GST.

### Location

Mitchell is among the main of industrial suburbs in Canberra and growing at quick rate. It services the north side of Canberra and is now expanding to service the growing Gungahlin developments. With major roads running through to the new Gungahlin developments this suburb will continue to have a large consumer base for years to come.



### Description

First floor office space fitted out ready to go and fully air conditioned. The unit comprises of your own kitchenette and bathroom facilities. Positioned in a modern building with a view over the industrial suburb of Mitchell. Available to occupy now!!

### Outgoings

Increases in Outgoings above base year 30 June

### Car Parking

4 Carparks



Central Location



Ready to move in!



Boardroom Table

### Contact:

Patrick Barton

P

M 0459 690 788

E patrick@bartonproperty.net.au