



285 Canberra Avenue, FYSHWICK 2609

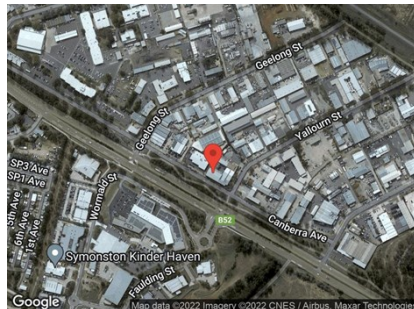
Trendy Office Ready To Go!

Unit:	Area sqm:	Rent \$/sqm	Rental PA	Nett/Gross
Unit 8	71	\$296	\$21,000	Gross

All figures are exclusive of GST.

Location

Located in Canberra's largest industrial suburb of Fyshwick. Fyshwick is extremely central being within 8 km to Canberra's CBD and Queanbeyan. Situated on the same street as Fyshwick's Building supplies. Officeworks, Dominoes Pizza and Harley Davidson just to name a few.



Description

At 285 Canberra Avenue, Fyshwick you will find a trendy double storey standalone building comprising of 12 office suites. Available to lease is unit 8 which will be vacant and ready to occupy in 1 - 2 months . Unit 8 consists of 71 sqm over two floors. The space is set up as open plan workstations with a warehouse feel. The space is fully air conditioned and has its own bathroom/kitchenette. Included is one secure car space at the rear.

For more information and to arrange an inspection today, contact Patrick Barton on 0459 690 788.

Outgoings

Increases in Outgoings above base year 30 June

Car Parking

1 car space

Contact:

Patrick Barton

P

M 0459 690 788

E patrick@bartonproperty.net.au