

167 Newcastle Street, FYSHWICK 2609

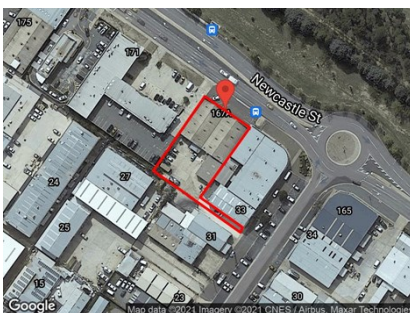
Rare Occupier Opportunity on Newcastle Street

Unit:	Area sqm:	Rent \$/sqm	Rental PA	Price	Nett/Gross
Whole Property	802	\$287	\$230,000	\$3,150,000	Gross

All figures are exclusive of GST.

Location

Located on the main arterial street of Canberra's leading industrial precinct Fyshwick. Newcastle Street boasts in excess of 30,000 cars per day this opportunity allows for high exposure, promoting your business. Ample car parking is at the front and rear of the building.



Description

WHOLE PROPERTY FOR LEASE OR FOR SALE!

A prime location on Newcastle Street positioned on a 1,654sqm site having a wide, retail industrial zoning.

The building is designed for multiple tenancies up to 3 or a single occupier.

A total building area of 802sqm that incorporates two showrooms with suspended ceiling and air conditioning. A rear warehouse of 120sqm with a large 808sqm of concrete yard with access from Isa Street.

With dual entry from two main streets; Isa Street and Newcastle Street.

Outgoings

Increases in Outgoings above base year 30 June

Car Parking

Ample onsite



Main Street Frontage



3 Phase Power



Drive Through Roller Door

Contact:

Brett Barton

P 02 6282 9090

M 0418 633 447

E brett@bartonproperty.net.au