



96 Bayldon Road, QUEANBEYAN 2620

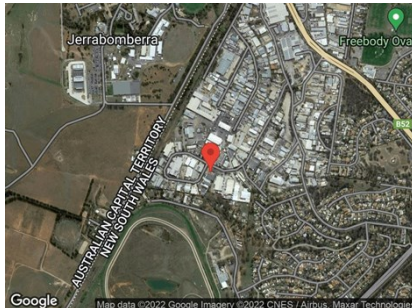
MODERN CARETAKERS UNIT - WEST QUEANBEYAN

Unit:	Area sqm:	Rent \$/sqm	Rental PA	Nett/Gross
Unit 6	243	\$198	\$48,000	Gross

All figures are exclusive of GST.

Location

Located on the corner of Bayldon Road, a loop street in the West Queanbeyan industrial area. Easy access to Fyshwick, Beard and Hume.



Description

Available to lease is this modern upkept caretakers unit situated in West Queanbeyan. A unique leasing opportunity. The unit totals an area of 243 sqm including a garage, courtyard, living/dining area, two bedroom, bathrooms and more. The space can also be utilised as an office. For more information on the property contact Patrick Barton or Kane Smith of Barton Commercial Property.

Outgoings

Increases in Outgoings above base year 30 June

Car Parking

Ample onsite

Contact:

Patrick Barton

P

M 0459 690 788

E patrick@bartonproperty.net.au