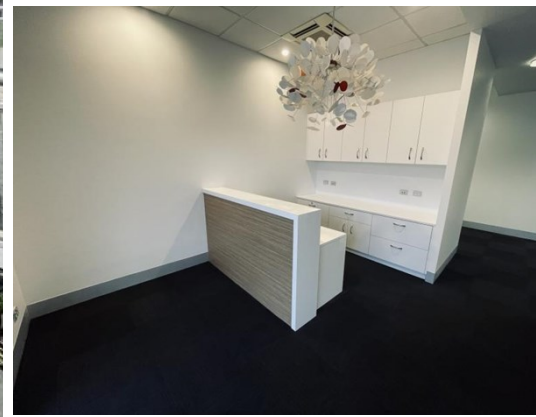


For Lease

Barton

The Positive Partnership



VIRIDIAN, 50 Eyre Street, KINGSTON 2604

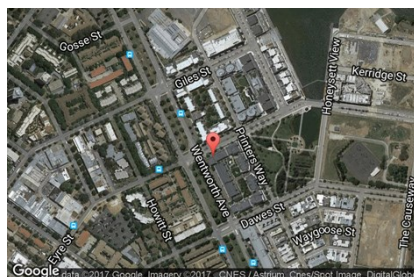
GROUND FLOOR COURTYARD UNIT

Unit:	Area sqm:	Rent \$/sqm	Rental PA	Nett/Gross
Unit 169	100	\$495	\$49,500	Gross

All figures are exclusive of GST.

Location

The 'Viridian' complex is located at the entry to Kingston Foreshore on the corner of Wentworth Avenue and Eyre Street, Kingston. Close proximity to cafes and other professional businesses.



Description

A ground floor unit featuring a sunny courtyard, Air conditioned, freshly painted and refurbished. With a wide purpose clause, this unit would suit a variety of users. Allocated basement carparking can be allocated at an additional cost.

Ready for immediate occupation! Contact Patrick Barton 0459 690 788 or Kane Smith 0429 959 865 to arrange an inspection.

Outgoings

Increases in outgoings above a base year

Car Parking

2 allocated carspaces



3
basement
spaces



Close by



Security



Fitted out
offices

Contact:

Patrick Barton

P

M 0459 690 788

E patrick@bartonproperty.net.au

www.bartonproperty.net.au

P (02) 6282 9090 | A Unit 11, 8 Gladstone Street, FYSHWICK ACT 2609 | PO Box 395, FYSHWICK ACT 2609

The information contained herein has been supplied to us. In passing the information on it should be noted that we do so without any representation on our part as to its truth or accuracy. All interested parties should make their own enquiries, and obtain their own independent advice, in order to verify the information.