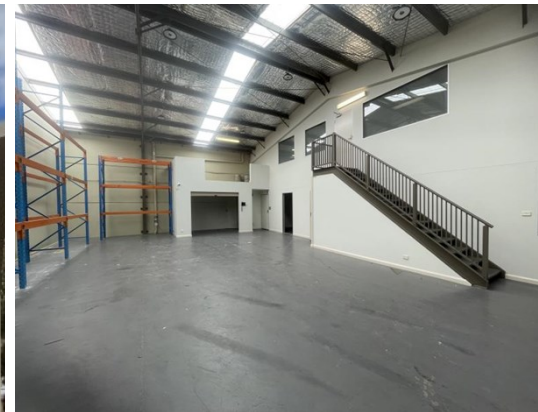


For Lease

Barton

The Positive Partnership



47 Tennant Street, FYSHWICK 2609

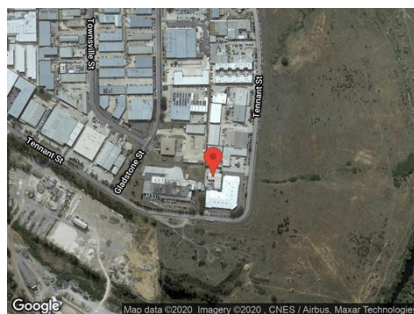
WORKSHOP-OFFICE-YARD FOR LEASE

Unit:	Area sqm:	Rent \$/sqm	Rental PA	Nett/Gross
Unit 4	425	\$165	\$70,000	Gross

All figures are exclusive of GST.

Location

Fyshwick is the major southside industrial area of Canberra. It has close proximity to the airport and major roads. The workforce of 14,000 people are employed in a diverse range of wholesale, retail to light industrial manufacturing areas.



Description

A modern warehouse and office accommodation with a private yard. The warehouse is neat & tidy with roller door, and a ground floor showroom, boardroom and amenities. The first floor presents to a high standard of office accommodation with security system installed.

Area split up as follows

Warehouse - 175 Sqm

Office - 130 Sqm

Yard - 170 Sqm

Available immediately for lease.

Outgoings

Gross Rent

Car Parking

Designated carparking



High clearance



Secure yard



3-phase power

Contact:

Patrick Barton

P

M 0459 690 788

E patrick@bartonproperty.net.au

www.bartonproperty.net.au

P (02) 6282 9090 | A Unit 11, 8 Gladstone Street, FYSHWICK ACT 2609 | PO Box 395, FYSHWICK ACT 2609

The information contained herein has been supplied to us. In passing the information on it should be noted that we do so without any representation on our part as to its truth or accuracy. All interested parties should make their own enquiries, and obtain their own independent advice, in order to verify the information.