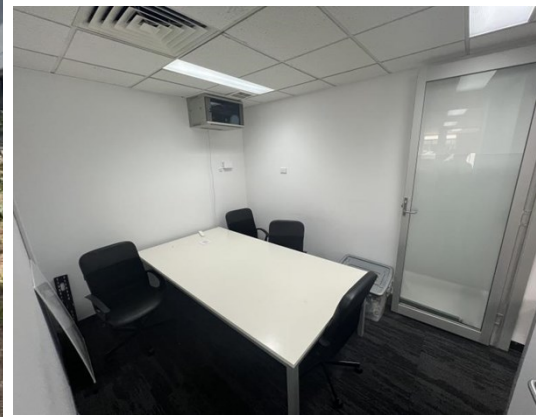


# For Lease



## 17 Napier Close, DEAKIN 2600

Unit:	Area sqm:	Rent \$/sqm	Rental PA	Net/Gross
Level 1 Unit 5	64	\$448	\$28,670	Gross

*All figures are exclusive of GST.*

### Location

Deakin is situated in a central Canberra location only minutes to the City, Parliament House and Woden. The precinct has an excellent mix of Government and private companies together with a strong medical presence.

### Description

A two-story office building that boasts an abundance of car parks. Unit 5 is 64 sqm and is on the first floor, offering ample natural light with a waiting room which has direct access to the board room as well as the open plan area meeting room. As well as one office. There are 3 allocated carparks available for \$1000 Per Annum + GST there are additional carparks for visitors.

### Contact:

**Kane Smith**

**P 02 6282 9090**

**M 0429 959 865**

**E kane@bartonproperty.net.au**

### Outgoings

Increases in outgoings above 3  
a base 30 June 2020

### Car Parking

[www.bartonproperty.net.au](http://www.bartonproperty.net.au)

P (02) 6282 9090 | A Unit 11, 8 Gladstone Street, FYSHWICK ACT 2609 | PO Box 395, FYSHWICK ACT 2609