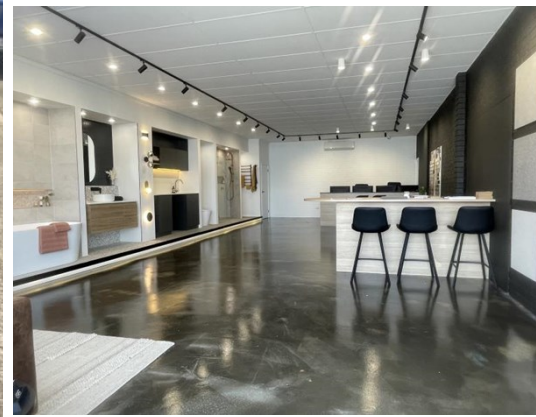


# For Lease

# Barton

The Positive Partnership



## 79-81 Gladstone Street, FYSHWICK 2609

Great Showroom / Office Space in Fyshwick

Unit:	Area sqm:	Rent \$/sqm	Rental PA	Nett/Gross
Unit 6	110	\$273	\$30,000	Gross

All figures are exclusive of GST.

### Location

Fyshwick is the most recognised industrial suburb, located in the south east of Canberra, with 2 of Canberra's main roads running close by. It neighbours the NSW border with Queanbeyan and is 10 minute drive from Canberra Airport. Fyshwick is now evolving from an older industrial suburb into a new modern area which includes wholesale, bulky good and the standard industrial uses

Gladstone Street is a very popular street that follows the boundary of Fyshwick and boasts a number of recognised retailers.

### Description

Available to lease now is unit 6 / 81 Gladstone Street, Fyshwick. Which is 110sqm and currently fitted out as showroom for a renovation company, full make good will be made leaving the unit in a warm shell state. The space is perfectly suited for showroom, office and storage space and includes a bathroom. There are carparks onsite for the whole complex and all parks are common.

Please contact Barton Commercial Property to arrange an inspection.

### Outgoings

Increases in Outgoings above base year 30 June

### Car Parking

Ample onsite

### Contact:

**Patrick Barton**

P

M 0459 690 788

E [patrick@bartonproperty.net.au](mailto:patrick@bartonproperty.net.au)

[www.bartonproperty.net.au](http://www.bartonproperty.net.au)

P (02) 6282 9090 | A Unit 11, 8 Gladstone Street, FYSHWICK ACT 2609 | PO Box 395, FYSHWICK ACT 2609

The information contained herein has been supplied to us. In passing the information on it should be noted that we do so without any representation on our part as to its truth or accuracy. All interested parties should make their own enquiries, and obtain their own independent advice, in order to verify the information.