

200-202 Gladstone Street, FYSHWICK 2609

Affordable Space

Unit:	Area sqm:	Rent \$/sqm	Rental PA	Nett/Gross
Unit 8	102	\$294	\$30,000	Gross

All figures are exclusive of GST.

Location

Fyshwick is recognised as the premier industrial suburb, located in the south east of Canberra, with 2 of Canberra's main roads running close by. It neighbours the NSW border, with Queanbeyan and is 10 minute drive from Canberra Airport. Fyshwick is evolving from an older industrial suburb into a new modern area which includes wholesale, bulky good and the standard industrial uses.

Description

Available to occupy now! 102 sqm of open plan office that has been recently repainted. With bathroom and kitchenette at the rear of the unit. The space is fully air conditioned and has car parking directly in front. Ideal for storage or to locate your business here today! The unit was previously used as office and has a generous amount of data points and power points.

Contact Barton Commercial property to arrange an inspection.

Outgoings

Car Parking

Contact:

Kane Smith

P 02 6282 9090

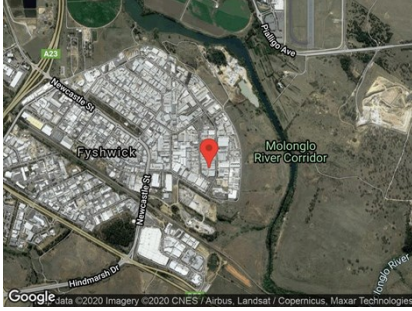
M 0429 959 865

E kane@bartonproperty.net.au

For Lease



The Positive Partnership



www.bartonproperty.net.au

P (02) 6282 9090 | A Unit 11, 8 Gladstone Street, FYSHWICK ACT 2609 | PO Box 395, FYSHWICK ACT 2609

The information contained herein has been supplied to us. In passing the information on it should be noted that we do so without any representation on our part as to its truth or accuracy. All interested parties should make their own enquiries, and obtain their own independent advice, in order to verify the information.