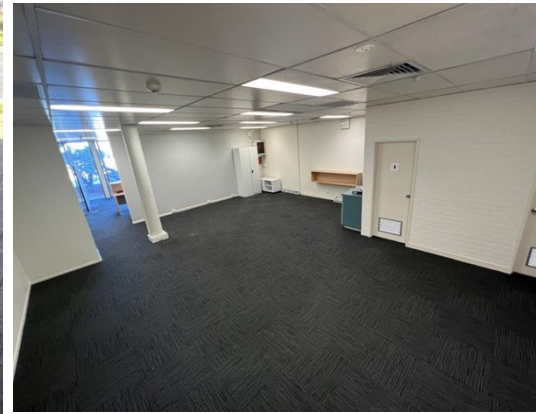


For Lease



FYSHWICK BUSINESS CENTRE, 169 Newcastle Street, FYSHWICK 2609

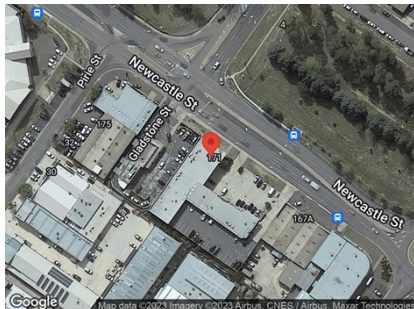
PRIME LOCATION!

Unit:	Area sqm:	Rent \$/sqm	Rental PA	Nett/Gross
Unit 8	151	\$265	\$40,000	Gross

All figures are exclusive of GST.

Location

Fyshwick is widely recognised as being the major industrial suburb of Canberra. Located in the south east, with 2 of Canberra's main roads running close by. A 10 minute drive from Canberra Airport. This property is on the best street in Fyshwick with constant traffic exposure.



Description

Available to lease now is Unit 8 169 Newcastle Street. The unit is fully airconditioned and comes with great exposure onto Newcastle Street perfect for signage. The unit is 151sqm features a reception area, 5 offices and an open plan area and includes male and female amenities as well as a kitchenette area.

Contact Barton Commercial Property for more information or to arrange an inspection!

Outgoings

Increases above base year

Car Parking

3 allocated on site plus visitors

Contact:

Kane Smith

P 02 6282 9090

M 0429 959 865

E kane@bartonproperty.net.au

www.bartonproperty.net.au

P (02) 6282 9090 | A Unit 11, 8 Gladstone Street, FYSHWICK ACT 2609 | PO Box 395, FYSHWICK ACT 2609

The information contained herein has been supplied to us. In passing the information on it should be noted that we do so without any representation on our part as to its truth or accuracy. All interested parties should make their own enquiries, and obtain their own independent advice, in order to verify the information.