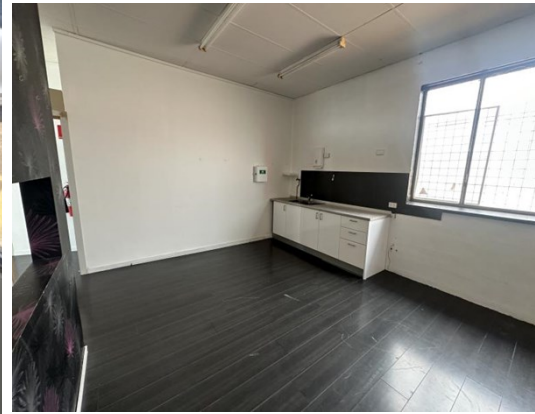
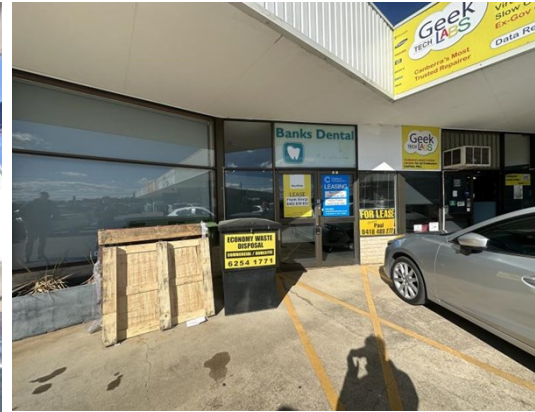


For Lease



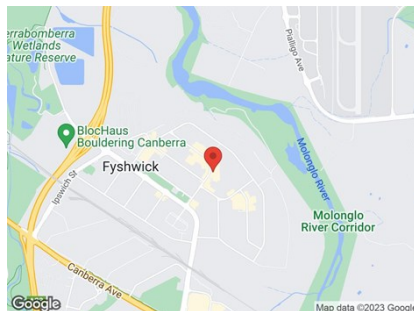
CUMBERLAND COURT, 52-58 Wollongong Street, FYSHWICK 2609

Unit:	Area sqm:	Rent \$/sqm	Rental PA	Nett/Gross
Unit 7a	100	\$300	\$30,000	Net

All figures are exclusive of GST.

Location

Located in Cumberland Court, fronting Wollongong Street in the busy part of Fyshwick. Fyshwick is the number one commercial suburb in Canberra.



Description

Available to lease now! Approximately 100 Sqm in the back corner of Cumberland Court and ready for a new user. Key features of the unit include,

- New flooring
- Office/board room
- kitchenette and amenities
- Air conditioned
- Carparking directly outside the unit.

This unit could suit a variety of users. Contact Patrick Barton on 0459 690 788 or Kane Smith 0429 959 865 for more info or to inspect.

Outgoings

Lessee's responsibility

Car Parking

Ample onsite

Contact:

Patrick Barton

P 02 6282 9090

M 0459 690 788

E patrick@bartonproperty.net.au

www.bartonproperty.net.au

P (02) 6282 9090 | A Unit 11, 8 Gladstone Street, FYSHWICK ACT 2609 | PO Box 395, FYSHWICK ACT 2609

The information contained herein has been supplied to us. In passing the information on it should be noted that we do so without any representation on our part as to its truth or accuracy. All interested parties should make their own enquiries, and obtain their own independent advice, in order to verify the information.