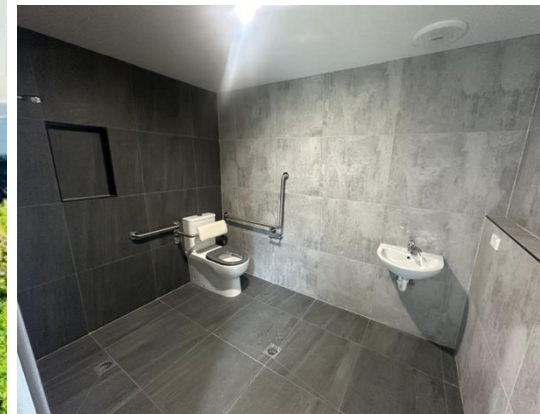
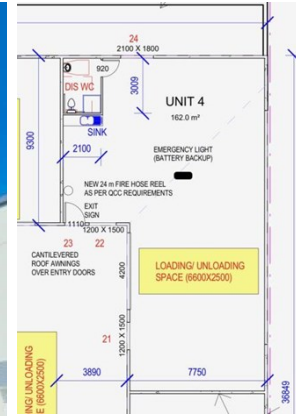


For Lease



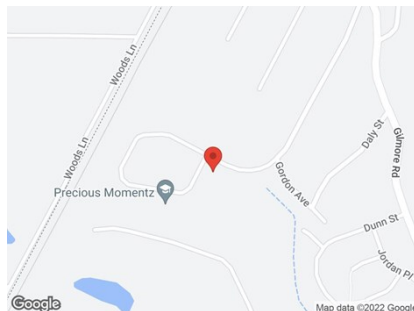
96 Bayldon Road, QUEANBEYAN 2620

Unit:	Area sqm:	Rent \$/sqm	Rental PA	Nett/Gross
Unit 4	162	\$272	\$44,000	Gross

All figures are exclusive of GST.

Location

Located on the corner of Bayldon Road, a loop street in the West Queanbeyan industrial area. Easy access to Fyshwick, Beard and Hume.



Description

Available to lease is unit 4 of 96 Bayldon Road. Consisting of 162 Sqm. The unit includes,

- High clearance warehouse
- Roller door access
- 3 Phase Power
- Kitchenette + Bathroom
- Office area

For more information on the property or to arrange an inspection, please contact Patrick Barton on 0459 690 788 of Barton Commercial Property.

Outgoings

Increases in Outgoings above base year 30 June

Car Parking

Contact:

Patrick Barton

P 02 6282 9090

M 0459 690 788

E patrick@bartonproperty.net.au

www.bartonproperty.net.au

P (02) 6282 9090 | A Unit 11, 8 Gladstone Street, Fyshwick ACT 2609 | PO Box 395, Fyshwick ACT 2609

The information contained herein has been supplied to us. In passing the information on it should be noted that we do so without any representation on our part as to its truth or accuracy. All interested parties should make their own enquiries, and obtain their own independent advice, in order to verify the information.