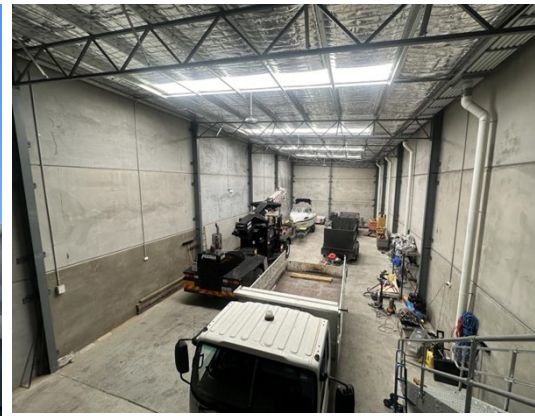


For Lease

Barton

The Positive Partnership



26 Tantalum Street, BEARD 2620

Position Your Business Here Today!

Unit:	Area sqm:	Rent \$/sqm	Rental PA	Nett/Gross
Unit 2	386	\$220	\$85,000	Gross

All figures are exclusive of GST.

Location

Located in the newly industrial precinct of Beard backing on to Queanbeyan and with easy access to Canberra Avenue. Beard is also a short 10 minute drive to the Canberra Airport.

Description

Available for lease now! A large clear span warehouse only built two years ago! With a modern feel as you walk in, the unit consists of office/reception area, kitchenette + amenities with a shower, and a 51 Sqm mezzanine which can be utilised for storage or converted into office space.

The warehouse has 6 meter height throughout with a large electric roller door and thick concrete slab that continues down the driveway that has its own secure sliding gate;

- 386 Sqm NLA
- 3 Carspaces allocated
- 6 meter height
- Large electric roller door

Contact Patrick Barton 0459 690 788 to inspect or for more information!

Contact:

Kane Smith

P 02 6282 9090

M 0429 959 865

E kane@bartonproperty.net.au

www.bartonproperty.net.au

P (02) 6282 9090 | A Unit 11, 8 Gladstone Street, FYSHWICK ACT 2609 | PO Box 395, FYSHWICK ACT 2609

The information contained herein has been supplied to us. In passing the information on it should be noted that we do so without any representation on our part as to its truth or accuracy. All interested parties should make their own enquiries, and obtain their own independent advice, in order to verify the information.

For Lease



The Positive Partnership

Outgoings

Increases in Outgoings
above base year 30 June

Car Parking

Ample onsite

www.bartonproperty.net.au

P (02) 6282 9090 | A Unit 11, 8 Gladstone Street, FYSHWICK ACT 2609 | PO Box 395, FYSHWICK ACT 2609

The information contained herein has been supplied to us. In passing the information on it should be noted that we do so without any representation on our part as to its truth or accuracy. All interested parties should make their own enquiries, and obtain their own independent advice, in order to verify the information.