

# For Lease



## 1 Daly Street, QUEANBEYAN 2620

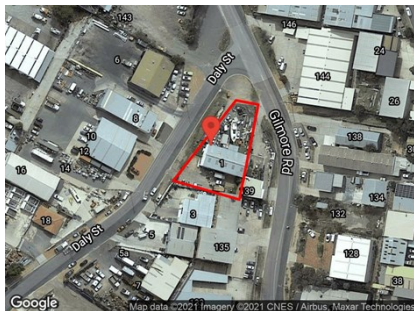
*LARGE YARD + WAREHOUSE!*

Unit:	Area sqm:	Rent \$/sqm	Rental PA	Nett/Gross
Lot 1	310	\$271	\$84,000	Net

*All figures are exclusive of GST.*

### Location

Centrally located in West Queanbeyan on a corner block of Gilmore road and Daly Street with easy access to Canberra Avenue. Queanbeyan is a 10 minute drive from Fyshwick, Hume and the Canberra Airport.



### Description

Available to Lease now! 1 Daly Street is a rare leasing opportunity. Consisting of 1,403 Sqm of land with a 310 Sqm open plan warehouse. This lot is zoned general industrial and could be suitable for a range of users!

### Site highlights

- Large hardstand area
- Two separate yards
- Open plan 310 Sqm warehouse
- Office and amenities
- Excellent signage opportunities

To arrange an inspection, or request more information, please contact Patrick Barton 0459 690 788 of Barton Commercial Property.

### Outgoings

Tenants responsibility

### Car Parking

Ample onsite

### Contact:

**Patrick Barton**

P 02 6282 9090

M 0459 690 788

E [patrick@bartonproperty.net.au](mailto:patrick@bartonproperty.net.au)

[www.bartonproperty.net.au](http://www.bartonproperty.net.au)

P (02) 6282 9090 | A Unit 11, 8 Gladstone Street, FYSHWICK ACT 2609 | PO Box 395, FYSHWICK ACT 2609

The information contained herein has been supplied to us. In passing the information on it should be noted that we do so without any representation on our part as to its truth or accuracy. All interested parties should make their own enquiries, and obtain their own independent advice, in order to verify the information.