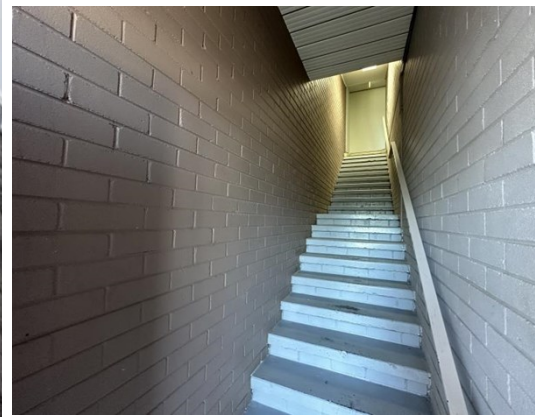
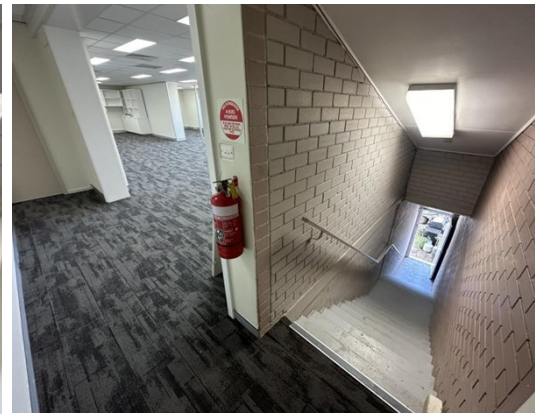


# For Lease



The Positive Partnership



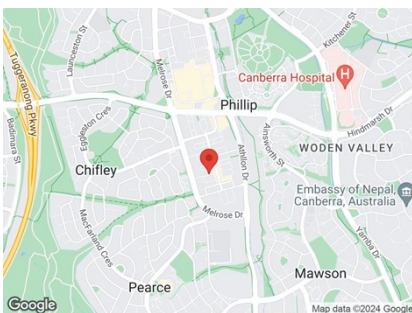
## 14 Dundas Court, PHILLIP 2606

First floor Office or Storage

Unit:	Area sqm:	Rent \$/sqm	Rental PA	Nett/Gross
Unit 5	150	\$200	\$30,000	Gross

All figures are exclusive of GST.

### Location



### Description

Available now to lease is this modern 150 sqm first floor office with great natural light. Ready to go with two offices and the rest of the space open plan. The unit has male and female bathrooms and a shower. Access to the unit is through the rear door off Prospect Court

Contact Patrick Barton 0459 690 788 or Kane Smith 0429 959 865 to arrange an inspection or for more information.

### Outgoings

Increases in Outgoings above base year 30 June

### Car Parking

Ample onsite

### Contact:

**Patrick Barton**

P 02 6282 9090

M 0459 690 788

E [patrick@bartonproperty.net.au](mailto:patrick@bartonproperty.net.au)

[www.bartonproperty.net.au](http://www.bartonproperty.net.au)

P (02) 6282 9090 | A Unit 11, 8 Gladstone Street, Fyshwick ACT 2609 | PO Box 395, Fyshwick ACT 2609

The information contained herein has been supplied to us. In passing the information on it should be noted that we do so without any representation on our part as to its truth or accuracy. All interested parties should make their own enquiries, and obtain their own independent advice, in order to verify the information.