

For Lease

Barton

The Positive Partnership



72 Bayldon Road, QUEANBEYAN 2620

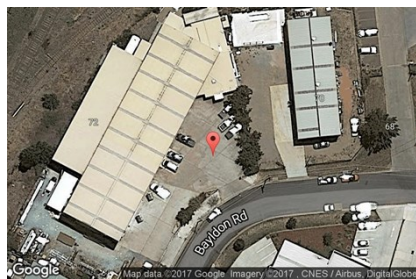
WAREHOUSE WITH OVERHEAD CRANE

| Unit: | Area sqm: | Rent \$/sqm | Rental PA | Nett/Gross |
|--------------------|-----------|-------------|-----------|------------|
| Lot Whole property | 1,455 | \$227 | \$330,000 | Gross |

All figures are exclusive of GST.

Location

In West Queanbeyan off Gilmore Road in close proximity to Fyshwick and Hume and easy access to Canberra Avenue.



Description

1,455 sqm warehouse with a six (6) metre clearance and two overhead 5-tonne cranes (the width of the warehouse). The newer crane is fully serviced and commissioned. 85 sqm of a/c offices. The site is 3,505 sqm with hardstand yard. Fully fenced with two driveways allowing for heavy vehicle access.

Outgoings

Increases above a base year

Car Parking

On-site parking

Contact:

Brett Barton

P 02 6282 9090

M 0418 633 447

E brett@bartonproperty.net.au

www.bartonproperty.net.au

P (02) 6282 9090 | A Unit 11, 8 Gladstone Street, FYSHWICK ACT 2609 | PO Box 395, FYSHWICK ACT 2609

The information contained herein has been supplied to us. In passing the information on it should be noted that we do so without any representation on our part as to its truth or accuracy. All interested parties should make their own enquiries, and obtain their own independent advice, in order to verify the information.