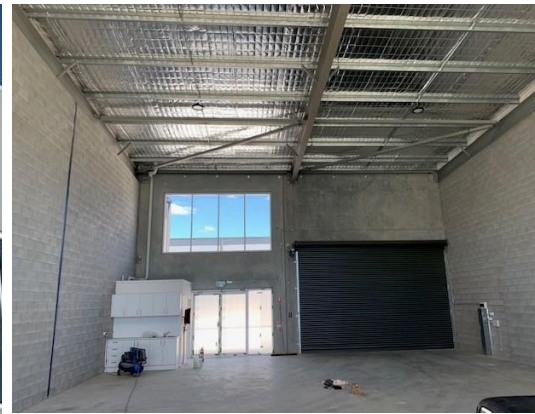


# For Lease

# Barton

The Positive Partnership



## 8 Beaconsfield Street, FYSHWICK 2609

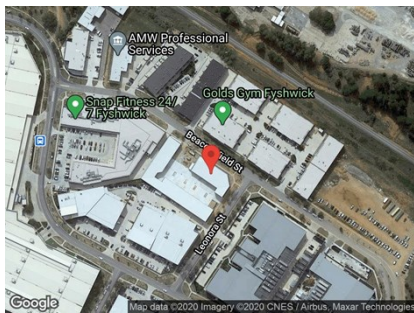
LARGE STREET FRONTAGE WAREHOUSING

Unit:	Area sqm:	Rent \$/sqm	Rental PA	Nett/Gross
Unit 13	235	\$331	\$77,750	Gross

All figures are exclusive of GST.

### Location

This property is located in the new retail/bulky goods precinct in Fyshwick, close to the Canberra Outlet Centre.



### Description

This is a modern industrial showroom complex of 14 units that allows for bulky goods/industrial users. The complex has shopfronts and roller doors with ample on-site carparking with allocated carparks per unit.

Available to lease now is unit 13, a street frontage unit with high roller door of 6.5 metre clearance and clear span warehouse of 235 sqm. The unit has 3 phase power, high bay lighting, kitchenette + toilet.

Enquire now for more information or to arrange an inspection.

### Outgoings

Increases in Outgoings above base year 30 June

### Car Parking

Ample onsite

### Contact:

**Brett Barton**

P 02 6282 9090

M 0418 633 447

E [brett@bartonproperty.net.au](mailto:brett@bartonproperty.net.au)

[www.bartonproperty.net.au](http://www.bartonproperty.net.au)

P (02) 6282 9090 | A Unit 11, 8 Gladstone Street, FYSHWICK ACT 2609 | PO Box 395, FYSHWICK ACT 2609

The information contained herein has been supplied to us. In passing the information on it should be noted that we do so without any representation on our part as to its truth or accuracy. All interested parties should make their own enquiries, and obtain their own independent advice, in order to verify the information.