

For Lease



10 Kemble Court, MITCHELL 2911

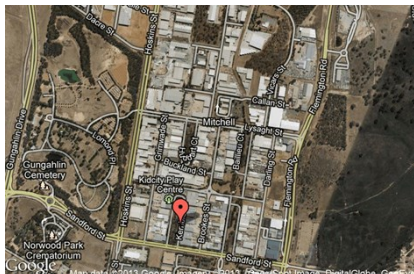
Street Frontage Showroom

Unit:	Area sqm:	Rent \$/sqm	Rental PA	Nett/Gross
Unit 4	97	\$361	\$35,000	Gross

All figures are exclusive of GST.

Location

Mitchell is the newest and fastest growing of the three industrial areas in Canberra. Mitchell serves all of the north side of Canberra. It services much of the growing Gungahlin precinct.



Description

A pristine unit fronting Kemble Court with the added bonus of rear roller door access off Brookes Street. Plenty of parking out the front and ideal for business's looking for a showroom, storage or office. Rare offering in this highly sought after suburb.

Enquire now to arrange an inspection and for more information.

Outgoings
Gross

Car Parking
Street Parking

Contact:

Patrick Barton

P 02 6282 9090

M 0459 690 788

E patrick@bartonproperty.net.au

www.bartonproperty.net.au

P (02) 6282 9090 | A Unit 11, 8 Gladstone Street, Fyshwick ACT 2609 | PO Box 395, Fyshwick ACT 2609

The information contained herein has been supplied to us. In passing the information on it should be noted that we do so without any representation on our part as to its truth or accuracy. All interested parties should make their own enquiries, and obtain their own independent advice, in order to verify the information.