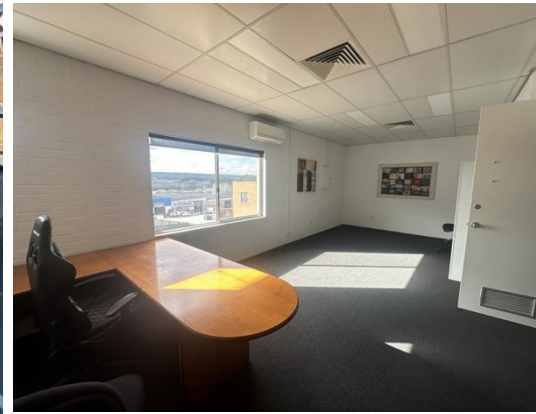
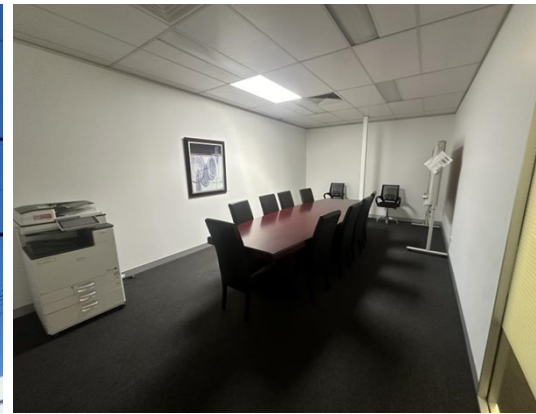


For Lease

Barton

The Positive Partnership



FYSHWICK PROFESSIONAL OFFICE SUITES, 125 Gladstone Street, FYSHWICK 2609

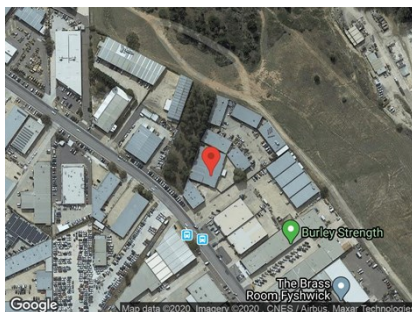
Turkey Office with Well Designed Layout

Unit:	Area sqm:	Rent \$/sqm	Rental PA	Nett/Gross
	414	\$175	\$72,500	Gross

All figures are exclusive of GST.

Location

Located in the heart of Gladstone Street in Fyshwick the major industrial suburb of Canberra.



Description

Available to lease immediately, a good sized, modern office with great natural light throughout. Includes,

- * Reverse-cycle air conditioning
- * Internet connection
- * Modern kitchen-breakout area
- * Conference room
- * Recently re-painted and new carpet laid
- * Intercom system from street
- * Fully secure 24/7

Available now to lease! Contact Patrick Barton 0459 690 788 to arrange an inspection.

Outgoings

Gross rent

Car Parking

On site



Boardroom



Secure access



Natural light



Air Con

Contact:

Patrick Barton

P 02 6282 9090

M 0459 690 788

E patrick@bartonproperty.net.au

www.bartonproperty.net.au

P (02) 6282 9090 | A Unit 11, 8 Gladstone Street, FYSHWICK ACT 2609 | PO Box 395, FYSHWICK ACT 2609

The information contained herein has been supplied to us. In passing the information on it should be noted that we do so without any representation on our part as to its truth or accuracy. All interested parties should make their own enquiries, and obtain their own independent advice, in order to verify the information.