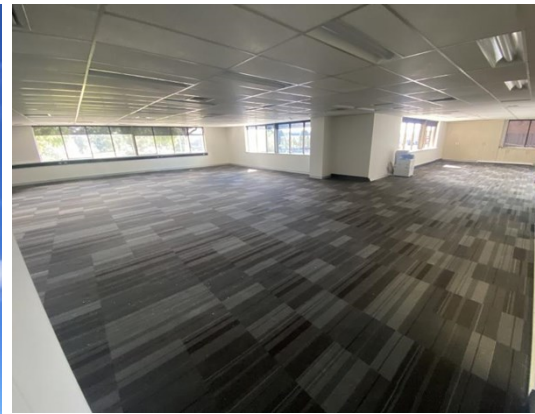


For Lease



BELCONNEN COMMERCIAL CHAMBERS, 59-69 Lathlain Street, BELCONNEN 2617

AFFORDABLE OFFICE SUITES FOR LEASE NOW

Unit:	Area sqm:	Rent \$/sqm	Rental PA	Net/Gross
Level 1 Unit D	47	\$300	\$13,950	Net
Level 1 Unit G	110	\$300	\$33,000	Net
Level 1 Unit H	118	\$300	\$35,400	Net

All figures are exclusive of GST.

Location

A major commercial centre for North Canberra. Located close to Westfield Shopping Centre with a mixture of Light Industrial and Government Departments. A convenient 10 minute drive to the Canberra CBD

Description

Available to lease now are 4 office spaces ranging from 46.5 - 228sqm. located on first floor of the building. There are shared amenities for all tenants on the first floor including a kitchen. These offices are in a prime location as they are opposite the Belconnen Shopping Centre.

Currently available to lease now are units

Units G 110 sqm & H 118 sqm. which are open plan and are currently connected. they can be leased separate.

Unit D which 46.5sqm and is open plan.

Unit K which is 66sqm and includes a new fit out with a reception area, 2 offices and a storage area

Contact:

Patrick Barton

P

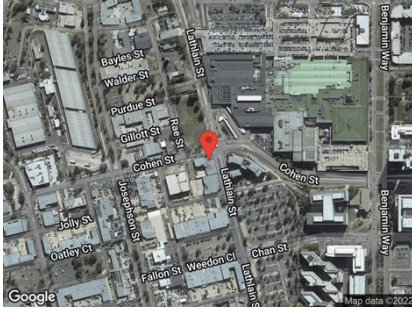
M 0459 690 788

E patrick@bartonproperty.net.au

www.bartonproperty.net.au

P (02) 6282 9090 | A Unit 11, 8 Gladstone Street, FYSHWICK ACT 2609 | PO Box 395, FYSHWICK ACT 2609

For Lease



Outgoings
TBA

Car Parking
On-site Parking Available

www.bartonproperty.net.au

P (02) 6282 9090 | A Unit 11, 8 Gladstone Street, Fyshwick ACT 2609 | PO Box 395, Fyshwick ACT 2609

The information contained herein has been supplied to us. In passing the information on it should be noted that we do so without any representation on our part as to its truth or accuracy. All interested parties should make their own enquiries, and obtain their own independent advice, in order to verify the information.