



## BELCONNEN COMMERCIAL CHAMBERS, 59-69 Lathlain Street, BELCONNEN 2617

AFFORDABLE OFFICE/RETAIL SUITES FOR LEASE NOW

Unit:	Area sqm:	Rent \$/sqm	Rental PA	Net/Gross
Ground Unit 2	101	\$400	\$40,400	Gross
Level 1 Unit 1	101	\$400	\$40,400	Gross
Level 1 Unit 2	147	\$400	\$58,800	Gross
Level 1 Unit 3	85	\$400	\$34,000	Gross
Level 1 Unit 4	56	\$400	\$22,400	Gross
Level 1 Unit 5	66	\$400	\$26,400	Gross

All figures are exclusive of GST.

### Location

A major commercial centre for North Canberra. Located close to Westfield Shopping Centre with a mixture of Light Industrial and Government Departments. A convenient 10 minute drive to the Canberra CBD

### Description

Belconnen Commercial Chambers contains a range of opportunities with open plan office and a ground floor retail unit. The building has been renovated including new ceiling tiles, air conditioning, carpet and glass central corridor, new LED lights and freshly painted.

A lift will be installed to access level 1 in early 2025!

The available tenancies are

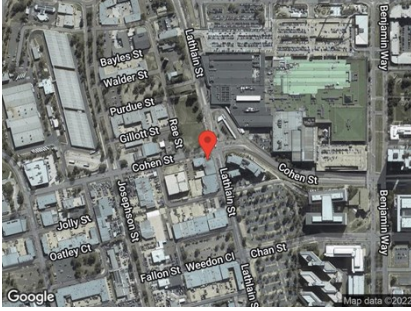
- Multiple open plan options on the first floor from 60 - 200 Sqm
- Ground floor retail unit of 101 Sqm.

Contact Barton Commercial Property for more information.

### Contact:

**Patrick Barton**  
P 02 6282 9090  
M 0459 690 788  
E patrick@bartonproperty.net.au

# For Lease



**Outgoings**  
TBA

**Car Parking**  
On-site Parking Available

[www.bartonproperty.net.au](http://www.bartonproperty.net.au)

P (02) 6282 9090 | A Unit 11, 8 Gladstone Street, FYSHWICK ACT 2609 | PO Box 395, FYSHWICK ACT 2609

The information contained herein has been supplied to us. In passing the information on it should be noted that we do so without any representation on our part as to its truth or accuracy. All interested parties should make their own enquiries, and obtain their own independent advice, in order to verify the information.