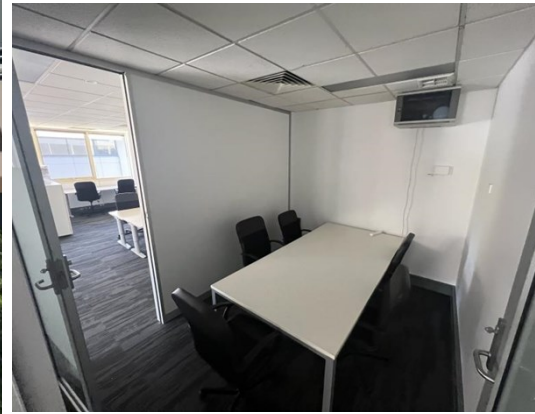
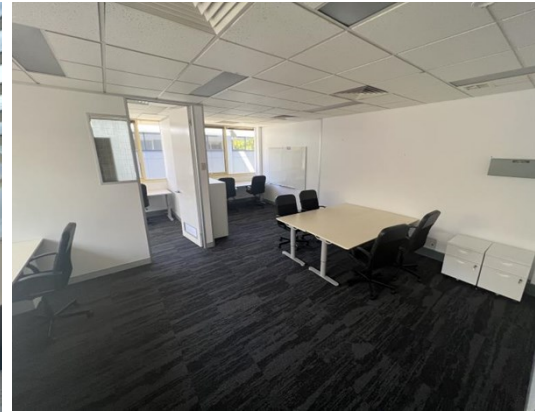


# For Lease



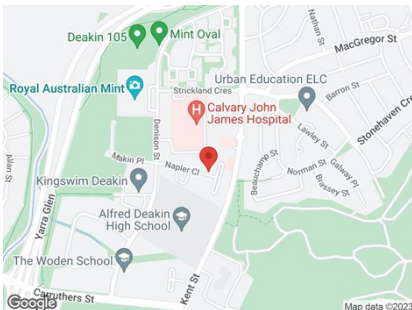
## 17 Napier Close, DEAKIN 2600

PRIME FIRST FLOOR SUITES IN DEAKIN - FLEXIBLE FITOUTS

Unit:	Area sqm:	Rent \$/sqm	Rental PA	Net/Gross
Level 1 Unit 5	61	\$420	\$25,620	Gross
Level 1 Unit 6	85	\$420	\$35,700	Gross
Level 1 Unit 5 and 6	146	\$400	\$58,400	Gross

All figures are exclusive of GST.

### Location



### Description

A leasing opportunity like no other. 17 Napier Close is a two storey office building that has been built to offer great natural light throughout the tenancies and a generous number of car parking for the tenants.

The units on offer all consist of a boardroom and offices that all have views. Each unit is fully air conditioned along with new Panasonic Nano-X systems. A prominent location offering excellent exposure and in close proximity to medical facilities and private hospitals along with accounting and personal services nearby. The complex enjoys a common kitchenette area and bathrooms.

Available to lease immediately are 3 different sized suites ranging from 61 sqm - 146 sqm!

The building is zoned CZ2 which allows for office, business use and community use (restricted to medical)



Boardroom



Natural  
light



A/C

### Contact:

**Patrick Barton**

P 02 6282 9090

M 0459 690 788

E [patrick@bartonproperty.net.au](mailto:patrick@bartonproperty.net.au)

[www.bartonproperty.net.au](http://www.bartonproperty.net.au)

P (02) 6282 9090 | A Unit 11, 8 Gladstone Street, FYSHWICK ACT 2609 | PO Box 395, FYSHWICK ACT 2609

The information contained herein has been supplied to us. In passing the information on it should be noted that we do so without any representation on our part as to its truth or accuracy. All interested parties should make their own enquiries, and obtain their own independent advice, in order to verify the information.

# For Lease

For more information or to inspect, contact the exclusive listing agents at Barton Commercial Property.

**Outgoings**

Increases in outgoings above a base year

**Car Parking**

3 - 15 Spaces Available

[www.bartonproperty.net.au](http://www.bartonproperty.net.au)

P (02) 6282 9090 | A Unit 11, 8 Gladstone Street, FYSHWICK ACT 2609 | PO Box 395, FYSHWICK ACT 2609

The information contained herein has been supplied to us. In passing the information on it should be noted that we do so without any representation on our part as to its truth or accuracy. All interested parties should make their own enquiries, and obtain their own independent advice, in order to verify the information.